

see our website for more details

Jun 10

# the old Long Barn



Rear of Long Barn



Kitchen



Lounge area



Room 7



## until November 2010

A former threshing barn which originally had the characteristic large door openings to drive a horse and wagon through.

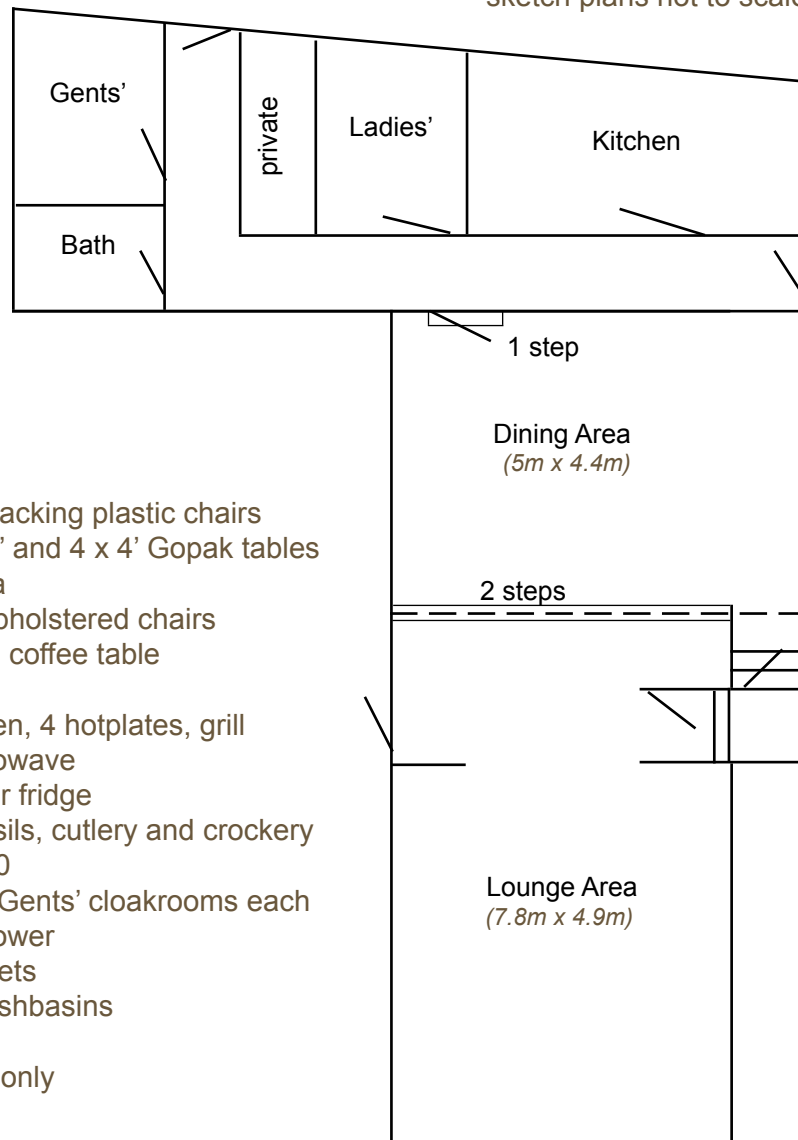
Simple and functional.

- ☆ Large split level lounge/dining room
- ☆ Modest kitchen
- ☆ Six single bedrooms
- ☆ Four twin bedrooms
- ☆ Centrally heated

The Long Barn is to be rebuilt as a £1m investment in the future of the Sheldon ministry.  
Please see separate leaflet for the new facilities that will be available from October 2011.  
For up to date information on the progress of the appeal and construction work please visit  
<http://longbarn.wordpress.com>

## Long Barn downstairs

sketch plans not to scale



### Dining Area

- ☆ 20 stacking plastic chairs
- ☆ 4 x 6' and 4 x 4' Gopak tables

### Lounge Area

- ☆ 28 upholstered chairs
- ☆ large coffee table

### Kitchen

- ☆ 1 oven, 4 hotplates, grill
- ☆ microwave
- ☆ larder fridge
- ☆ utensils, cutlery and crockery for 40

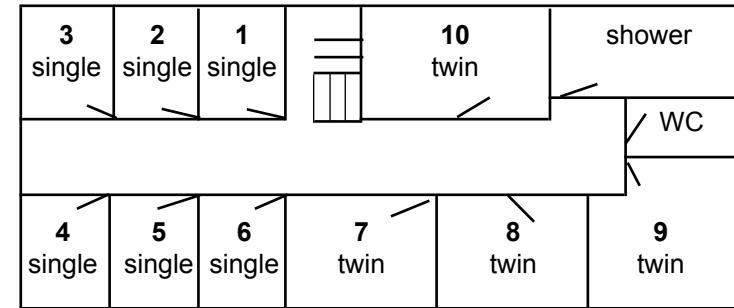
### Ladies' and Gents' cloakrooms each

- ☆ 1 shower
- ☆ 2 toilets
- ☆ 2 washbasins

### Bathroom

- ☆ bath only

## Long Barn upstairs



Long Barn bedrooms are small, but ideal for groups needing single rooms.

- ☆ Beds in rooms 7 and 9 can be moved to make doubles. (They may have one extra mattress each, but we do not recommend this.)
- ☆ Rooms 8 and 10 have one divan bed and one higher fixed bed reached by a kick step.
- ☆ Beds in rooms 1 – 6 are fixed approx 2' high.

Each room also has

- ☆ small table with upholstered upright chair
- ☆ two 3-drawer bedside cabinets (twins)
- ☆ one 4-drawer cabinet under the bed (singles)
- ☆ hanging hooks on back of door and hangers

Each bed is supplied with

- ☆ 2 pillows each with an under-slip
- ☆ 2 blankets folded in a bag
- ☆ mattress protector and under-sheet

Guests bring with them either

- ☆ sleeping bag and pillow slips, or
- ☆ bottom sheet, duvet and pillow slips, or
- ☆ two sheets and pillow slips