

see our website for more details

Jul 11

# the Pound House



The Cider Press Lounge



Bedroom 3



## About the Pound House

A 17th century barn with cob walls and some original oak timbers. Fully refurbished in 2003 to a high standard of comfort while retaining lots of traditional character.

- \* Light and spacious long meeting/dining room opens onto terrace
- \* Two smaller meeting/sitting rooms
- \* Large well-equipped kitchen
- \* Six en-suite bedrooms
- \* Centrally heated



The Dining Room



The Kitchen



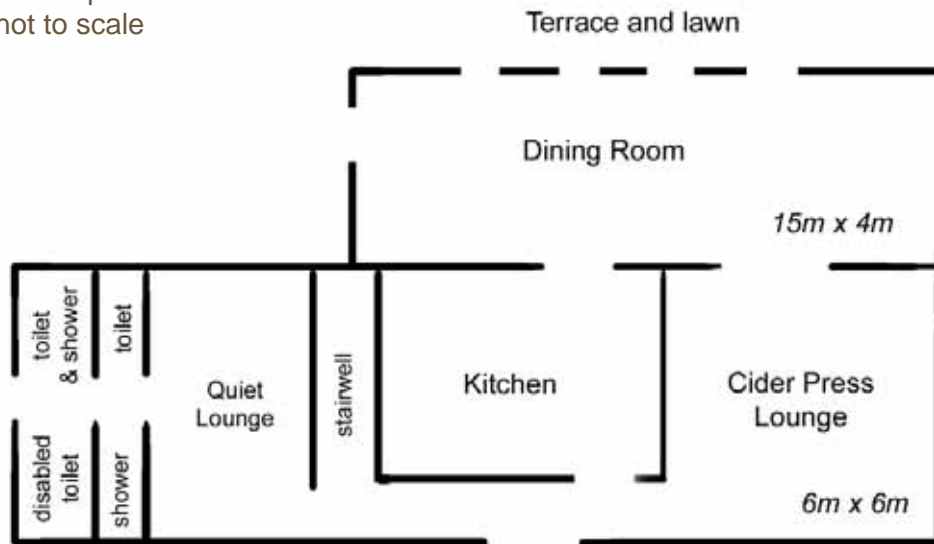
The Quiet Lounge



The Terrace

## Pound House downstairs

sketch plans  
not to scale



### Dining Room

- \* 50 stacking plastic chairs, 9 x 6' and 6 x 4' Gopak tables
- \* sliding doors onto terrace with lovely views across the valley
- \* underfloor heating

### Kitchen

- \* 3 electric ovens, 8 electric hotplates, electric grill, microwave
- \* fridge, larder fridge, freezer
- \* dishwasher, hot cupboard (wheels into dining room)
- \* fully equipped with cooking utensils, crockery, cutlery etc

### Quiet Lounge

- \* seats 10 in very comfy armchairs

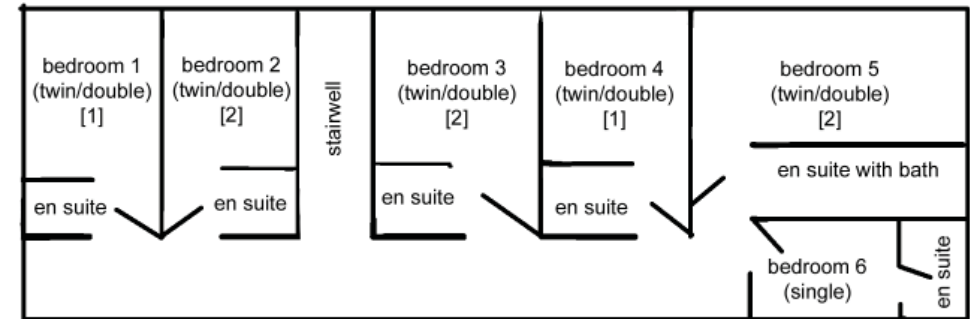
### Cider Press lounge

- \* seats 20 in comfortable upholstered chairs and sofas

### Toilets and showers

- \* suitable for use by members of group bringing tent or caravan

## Pound House upstairs



Six en-suite bedrooms.

Each room has

- \* small table with upholstered upright chair
- \* two 3-drawer bedside cabinets
- \* hanging rail and hangers

Each bed is supplied with

- \* 2 pillows each with an under-slip
- \* 2 blankets folded in a bag
- \* mattress protector and under-sheet

Guests bring with them either

- \* sleeping bag and pillow slips, or
- \* bottom sheet, duvet and pillow slips, or
- \* two sheets and pillow slip

Additional notes:

- \* The number in square brackets is the maximum number of extra mattresses each room can accommodate. The total number of extras is agreed at the time of booking depending on the type of group, age, etc.
- \* Room 6 is small (but perfectly formed!)
- \* *This layout is from February 2012 - check for autumn 2011*