

the Pig Pens

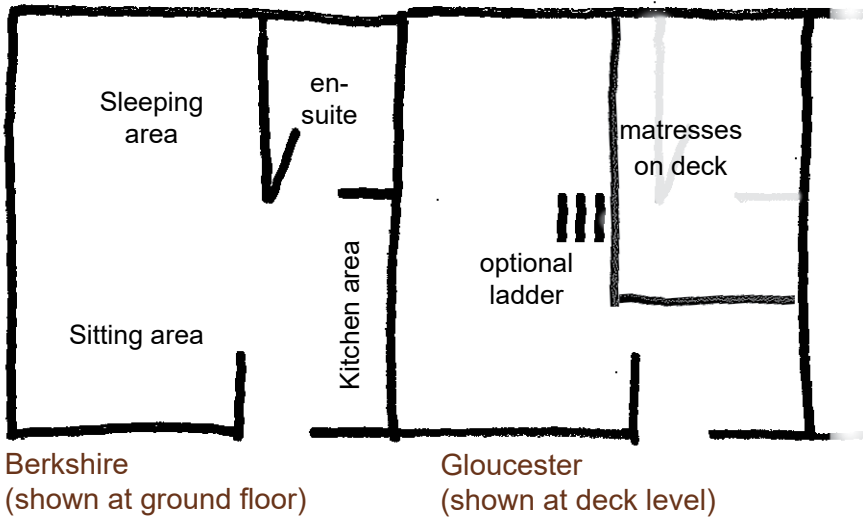


About the Pig Pens

The three Pig Pens are small units built to a very high standard in 2006. They are ideal for disabled group members, family groups, leader's rooms, or simply extra bed spaces to make up numbers.

- ☆ Twin beds plus 2 armchairs, table and 2 chairs
- ☆ Two Pens with 2 beds on sleeping deck up loft ladder
- ☆ En-suite shower room
- ☆ Small kitchen
- ☆ Underfloor heating

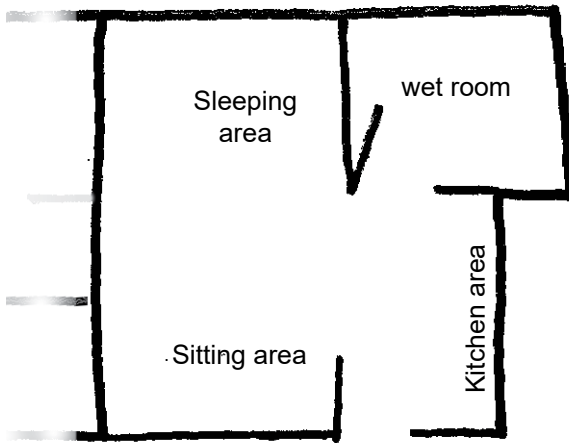
Berkshire & Gloucester Pig Pens



Berkshire and Gloucester Pig Pens are identical

- ☆ Twin beds in sleeping area – can be double or stowed to single
- ☆ Two 3-drawer bedside cabinets
- ☆ Hanging rail and suspended fabric storage unit
- ☆ 4' Gopak table
- ☆ 2 plastic chairs
- ☆ 2 armchairs
- ☆ coffee table
- ☆ Wet room with shower, toilet and wash handbasin
- ☆ Kitchen with fridge, microwave, hob, kettle, etc (no oven)
- ☆ Kitchen electrics on a separate circuit can be switched off when occupied by children
- ☆ Ladder (can be folded away) to upper deck, protected by balustrade and stairgate, to 2 mattresses.

Tamworth Pig Pen



Tamworth
(no sleeping deck)

The 3 Pig Pens are all in a row, each with their own patio.

The wheelchair-friendly path runs from the main car park, round the Pound House, past the Pig Pens, round the Long Barn and to the top car park.

Tamworth Pig Pen has the best disabled access and no sleeping deck

- ☆ Twin beds in sleeping area – can be double or stowed to single
- ☆ Two 3-drawer bedside cabinets
- ☆ Hanging rail and suspended fabric storage unit
- ☆ 4' Gopak table
- ☆ 2 plastic chairs
- ☆ 2 armchairs
- ☆ coffee table
- ☆ Wet room with shower, toilet and wash handbasin - wider door swings both ways for easier access. Higher toilet, grab rails for toilet and shower area with non-slip flooring.
- ☆ Kitchen as Berkshire and Gloucester

see our website for more details



Pig Pen patio



Kitchen



Bedroom area



Wet room in Tamworth



Seating area



Sky cots (Berkshire & Gloucester)