

# The Long Barn



## About the Long Barn

---

Completely rebuilt during 2011 to a very high standard.

- ☆ 9 en-suite bedrooms
- ☆ 2 large and light main rooms
- ☆ Conservatory and southwest facing terrace
- ☆ Kitchen, servery, toilets
- ☆ Full disabled access throughout ground floor

# Long Barn ground floor

Large, light and airy **meeting room**

- ☆ chairs and sofas to seat 30
- ☆ adjoining servery

Large and light **dining room** or second **meeting room** adjoins kitchen

- ☆ 8 folding tables
- ☆ 30 dining chairs
- ☆ lightweight chairs and sofas to seat 10

Furniture can be moved between the two rooms to suit your needs.

The large folding doors and conservatory/corridor enable you to have free flow between the two main rooms or to have good sound proofing and privacy between them.

Kitchen

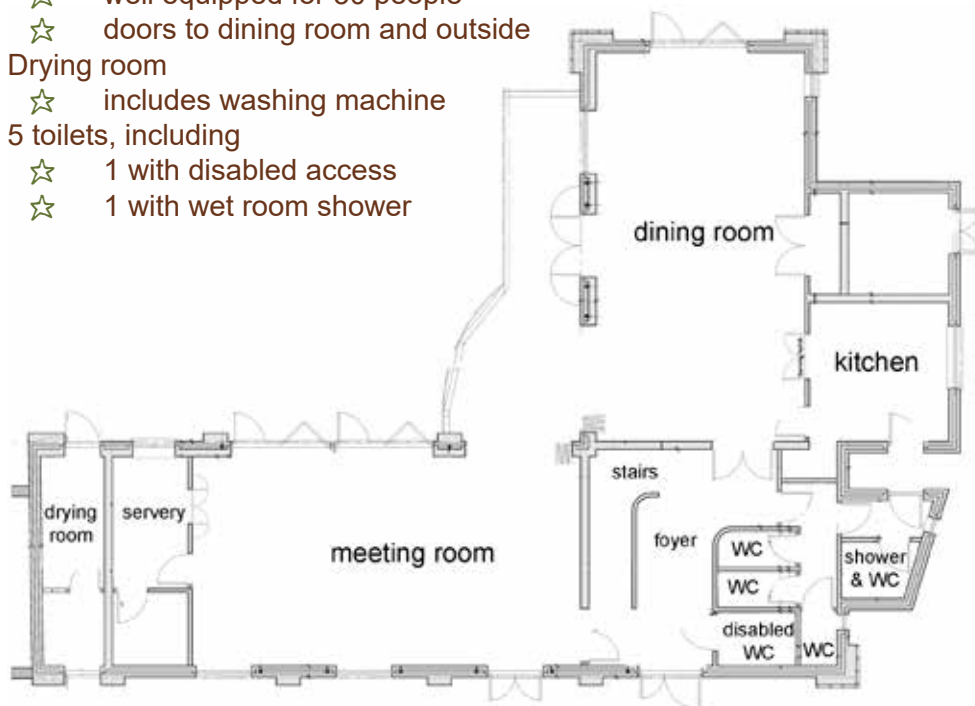
- ☆ well equipped for 30 people
- ☆ doors to dining room and outside

Drying room

- ☆ includes washing machine

5 toilets, including

- ☆ 1 with disabled access
- ☆ 1 with wet room shower



# Long Barn first floor

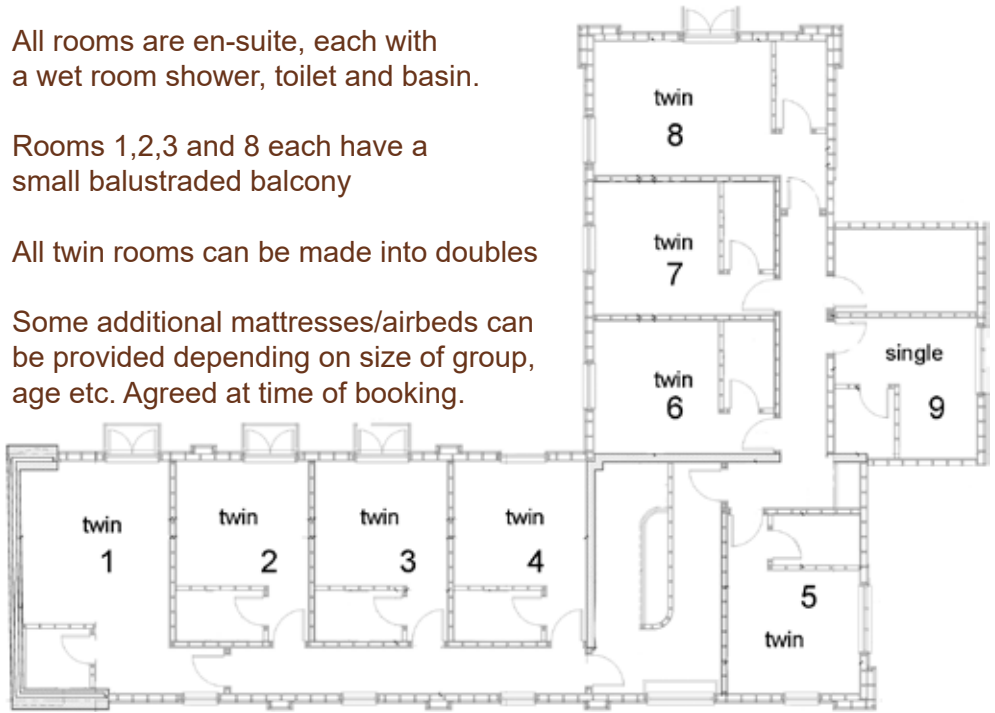
---

All rooms are en-suite, each with a wet room shower, toilet and basin.

Rooms 1,2,3 and 8 each have a small balustraded balcony

All twin rooms can be made into doubles

Some additional mattresses/airbeds can be provided depending on size of group, age etc. Agreed at time of booking.



Each room (9) has

- ☆ one or two easy chairs
- ☆ bedside cabinet
- ☆ hanging rail

Each bed (17) is supplied with

- ☆ 2 pillows each with an under-slip
- ☆ 2 blankets
- ☆ mattress protector and under-sheet

*see our website for more details*



Room 1 (large bedroom)



Entrance hallway



Meeting room



Room 4 (standard bedroom)



Kitchen



Dining room